



RODS AND ADAPTER RODS

PART NO.	SIZE	DESCRIPTION
AR-1-1	5/16"	Adapter Rod
AR-1-2	3/8"	Adapter Rod
AR-1-SS	5/16"	Super Short
AR-1-2SS	3/8"	Super Short



BLUE PREMIUM RODS

STR-1-1	5/16" X 36"	Blue Premium Sewer Rod Complete With Coupling
STR-1-2	5/16" X 39"	Blue Premium Sewer Rod Complete With Coupling
STR-1-3	5/16" X 48"	Blue Premium Sewer Rod Complete With Coupling
STR-1-4	5/16" X 60"	Blue Premium Sewer Rod Complete With Coupling
STR-1-5	5/16" X 72"	Blue Premium Sewer Rod Complete With Coupling



STR-1-6	3/8" X 36"	Blue Premium Sewer Rod Complete With Coupling
STR-1-7	3/8" X 39"	Blue Premium Sewer Rod Complete With Coupling
STR-1-8	3/8" X 48"	Blue Premium Sewer Rod Complete With Coupling
STR-1-9	3/8" X 60"	Blue Premium Sewer Rod Complete With Coupling
STR-1-10	3/8" X 72"	Blue Premium Sewer Rod Complete With Coupling



FLEXICHROME SILVER RODS

STB-1-1	5/16" X 36"	Sewer Rod Complete With Coupling
STB-1-2	5/16" X 39"	Sewer Rod Complete With Coupling
STB-1-3	5/16" X 48"	Sewer Rod Complete With Coupling
STB-1-4	5/16" X 60"	Sewer Rod Complete With Coupling
STB-1-5	5/16" X 72"	Sewer Rod Complete With Coupling



STB-1-6	3/8" X 36"	Sewer Rod Complete With Coupling
STB-1-7	3/8" X 39"	Sewer Rod Complete With Coupling
STB-1-8	3/8" X 48"	Sewer Rod Complete With Coupling
STB-1-9	3/8" X 72"	Sewer Rod Complete With Coupling
STB-1-10	3/8" X 12'	Sewer Rod Complete With Coupling

QUICK COUPLE RODS.

ALL 5/16" RODS ARE AVAILABLE WITH QUICK CONNECT DISSCONNECT SPRING LOADED PIN COUPLINGS. PLEASE ADD "R" TO PART NUMBER AND ADD \$10.00 TO EACH ROD.



ACCESSORY TOOLS

Part No.	Size	Description
PICK UP TOOLS		
P1-1	5/16"	Pick Up Tool For Sectional Rod
P1-2	3/8"	Pick Up Tool For Sectional Rod
P1-3	0.375	Pick Up Tool with Set Screw Coupling
P1-4	0.375	Pick Up Tool with .375 set screw coupling



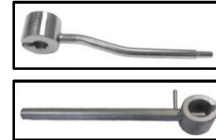
SPEAR HEAD

B2-1	2"	2" Spear Head with 5/16" Adaptor rod and coupling
B2-2	2"	2" Spear Head with 3/8" Adaptor rod and coupling
B4-1	4"	4" Spear Head with 5/16" Adaptor rod and coupling
B4-2	4"	4" Spear Head with 3/8" Adaptor rod and coupling



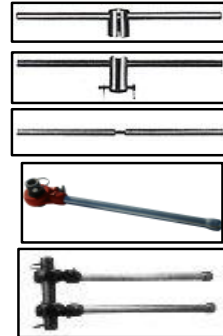
ASSEMBLY TOOLS

T1-1	5/16"	Assembly Wrench
T1-2	3/8"	Assembly Wrench
T2-1	5/16"	Assembly Turning Handle
T2-2	3/8"	Assembly Turning Handle



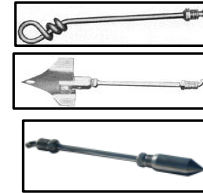
PULL OUT AND TURNING TOOLS

T3-1	5/16"	Pull Out Tool
T3-2	3/8"	Pull Out Tool
T4-1	5/16"	Pull Out & Twisting Handle
T4-2	3/8"	Pull Out & Twisting Handle
T5-1		Bar Turning Handle FOR 5/16" AND 3/8"
T8		ROUND ROD PULLER Fits tools 1/4" to 3/8" Rod
T11	5/16"	Rod Turning Ratchet single
T12	3/8"	Rod Turning Ratchet one man double
T13	5/16"	Rod Turning Ratchet single
T14	3/8"	Rod Turning Ratchet one man double



SPECIAL BORING TOOLS

T6-1	5/16"	Loop Swivel Tool
T6-2	3/8"	Loop Swivel Tool
T7-1	5/16"	Sand Leader With Adapter Rod & Couplings
T7-2	3/8"	Sand Leader With Adapter Rod & Couplings
T9-1	5/16"	Bullet ToolWith Adapter Rod
T9-2	3/8"	Bullet ToolWith Adapter Rod
T10-1	5/16"	Pilot Bullet Tool With Pullout Swivel With Adapter Rod
T10-2	3/8"	Pilot Bullet Tool With Pullout Swivel With Adapter Rod



FOR ANY TOOL WITH SET SCREW COUPLING ADD "SS" AND EITHER 3 FOR .375, 4 FOR .393, 5 FOR .415 OR 6 FOR .461. USE 3/8" PRICE FOR THESE.
EXAMPLE: T9-SS-3 BULLET TOOL WITH .375 SET SCREW COUPLING.



ROUND WIRE CORKSCREWS

F1-1	1-1/2"	Use With 5/16" Rod
F1-2	1-1/2"	Use With 3/8" Rod
F2-1	2"	Use With 5/16" Rod
F2-2	2"	Use With 3/8" Rod
F3-1	3"	Use With 5/16" Rod
F3-2	3"	Use With 3/8" Rod
F4-1	3-1/2"	Use With 5/16" Rod
F4-2	3-1/2"	Use With 3/8" Rod
F5-1	5"	Use With 5/16" Adaptor Rod
F5-2	5"	Use With 3/8" Rod
F6-1	6"	Use With 5/16" Adaptor Rod
F6-2	6"	Use With 3/8" Rod



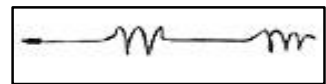
DOUBLE ROUND WIRE CORKSCREWS

FD3-1	3"	Use With 5/16" Rod
FD3-2	3"	Use With 3/8" Rod
FD4-1	4"	Use With 5/16" Rod
FD4-2	4"	Use With 3/8" Rod
FD6-1	6"	Use With 5/16" Rod
FD6-2	6"	Use With 3/8" Rod



SAND CORKSCREWS

G-3-1	3"	Sand Corkscrew Use With 5/16" Rod
G-3-2	3"	Sand Corkscrew Use With 3/8" Rod



CLEANING TOOLS

AUGERS

A2-1	2"	2" Auger for 5/16" rods
A2-2	2"	2" Auger for 3/8" rods
A3-1	3"	3" Auger for 5/16" rods
A3-2	3"	3" Auger for 3/8" rods
A4-1	4"	4" Auger for 5/16" rods



AUGERS

A4-2	4"	4" Auger for 3/8" rods
A5-1	5"	5" Auger for 5/16" rods
A52	5"	5" Auger for 3/8" rods
A6-1	6"	6" Auger for 5/16" rods
A6-2	6"	6" Auger for 3/8" rods
A8-1	8"	8" Auger for 5/16" rods
A8-2	8"	8" Auger for 3/8" rods
A10-1	10"	10" Auger for 5/16" rods
A10-2	10"	10" Auger for 3/8" rods



FOR ANY AUGER WITH SET SCREW COUPLING ADD "SS" AND EITHER
 3 FOR .375, 4 FOR .393, 5 FOR .415 OR 6 FOR .461. USE 3/8" PRICE FOR THESE.
 EXAMPLE: A4-SS-3 4" AUGER WITH .375 SET SCREW COUPLING.

SQUARE BAR CORKSCREWS

E2-1	2"	2" Square Bar corkscrew for 5/16" rod
E2-2	2"	2" Square Bar corkscrew for 3/8" rod
E3-1	3"	3" Square Bar corkscrew for 5/16" rod
E3-2	3"	3" Square Bar corkscrew for 3/8" rod
E4-1	4"	4" Square Bar corkscrew for 5/16" rod
E4-2	4"	4" Square Bar corkscrew for 3/8" rod
E5-1	5"	5" Square Bar corkscrew for 5/16" rod
E5-2	5"	5" Square Bar corkscrew for 3/8" rod
E6-1	6"	6" Square Bar corkscrew for 5/16" rod
E6-2	6"	6" Square Bar corkscrew for 3/8" rod
E8-1	8" Std.	8" Square Bar corkscrew for 5/16" rod
E8-2	8" Std.	8" Square Bar corkscrew for 3/8" rod
E8-4	8" H.D.	8" HD Square Bar corkscrew for 5/16" rod
E8-5	8" H.D.	8" HD Square Bar corkscrew for 3/8" rod
E10-1	10"	10" Square Bar corkscrew for 5/16" rod
E10-2	10"	10" Square Bar corkscrew for 3/8" rod
E12-1	12"	12" Square Bar corkscrew for 5/16" rod
E12-2	12"	12" Square Bar corkscrew for 3/8" rod

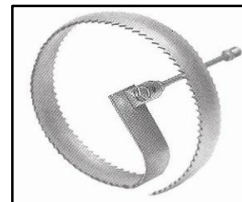


FOR ANY SQUARE BAR WITH SET SCREW COUPLING ADD "SS" AND EITHER
 3 FOR .375, 4 FOR .393, 5 FOR .415 OR 6 FOR .461. USE 3/8" PRICE FOR THESE.
 FOR EXAMPLE: E4-SS-3 4" SQUARE BAR CORK WITH .375 SET SCREW COUPLING

ROOT SAWS

CONCAVE ROOT SAW STANDARD 1/8" THICK

CRS-3-1	3"	3" Concave Root Saw for 5/16" rod
CRS-3-2	3"	3" Concave Root Saw for 3/8" rod
CRS-4-1	4"	4" Concave Root Saw for 5/16" rod
CRS-4-2	4"	4" Concave Root Saw for 3/8" rod
CRS-5-1	5"	5" Concave Root Saw for 5/16" rod
CRS-5-2	5"	5" Concave Root Saw for 3/8" rod
CRS-6-1	6"	6" Concave Root Saw for 5/16" rod
CRS-6-2	6"	6" Concave Root Saw for 3/8" rod
CRS-8-1	8"	8" Concave Root Saw for 5/16" rod
CRS-8-2	8"	8" Concave Root Saw for 3/8" rod
CRS-10-1	10"	10" Concave Root Saw for 5/16" rod
CRS-10-2	10"	10" Concave Root Saw for 3/8" rod
CRS-12-1	12"	12" Concave Root Saw for 5/16" rod
CRS-12-2	12"	12" Concave Root Saw for 3/8" rod
CRS-15-1	15"	15" Concave Root Saw for 5/16" rod
CRS-15-2	15"	15" Concave Root Saw for 3/8" rod
CRS-18-1	18"	18" Concave Root Saw for 5/16" rod
CRS-18-2	18"	18" Concave Root Saw for 3/8" rod
CRS-20-1	20"	20" Concave Root Saw for 5/16" rod
CRS-20-2	20"	20" Concave Root Saw for 3/8" rod



FOR BLADE ONLY ADD "B" AFTER PART NO. AND DEDUCT \$10.00
 FOR ANY ROOT SAW WITH SET SCREW COUPLING ADD "SS" AND EITHER
 3 FOR .375, 4 FOR .393, 5 FOR .415 OR 6 FOR .461. USE 3/8" PRICE FOR THESE.
 FOR EXAMPLE: CRS10-SS-3 10" CONCAVE SAW WITH .375 SET SCREW COUPLING

STANDARD FLAT ROOT SAWS 1/8" THICK

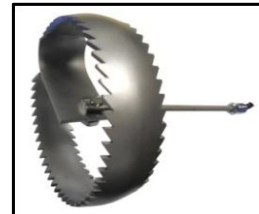
FRS-3-1	3"	3" Standard Flat Root Saw for 5/16" rod
FRS-3-2	3"	3" Standard Flat Root Saw for 3/8" rod
FRS-4-1	4"	4" Standard Flat Root Saw for 5/16" rod
FRS-4-2	4"	4" Standard Flat Root Saw for 3/8" rod
FRS-6-1	6"	6" Standard Flat Root Saw for 5/16" rod
FRS-6-2	6"	6" Standard Flat Root Saw for 3/8" rod
FRS-8-1	8"	8" Standard Flat Root Saw for 5/16" rod
FRS-8-2	8"	8" Standard Flat Root Saw for 3/8" rod
FRS-10-1	10"	10" Standard Flat Root Saw for 5/16" rod
FRS-10-2	10"	10" Standard Flat Root Saw for 3/8" rod
FRS-12-1	12"	12" Standard Flat Root Saw for 5/16" rod
FRS-12-2	12"	12" Standard Flat Root Saw for 3/8" rod
FRS-15-1	15"	15" Standard Flat Root Saw for 5/16" rod
FRS-15-2	15"	15" Standard Flat Root Saw for 3/8" rod
FRS-18-1	18"	18" Standard Flat Root Saw for 5/16" rod
FRS-18-2	18"	18" Standard Flat Root Saw for 3/8" rod
FRS-20-1	20"	20" Standard Flat Root Saw for 5/16" rod
FRS-20-2	20"	20" Standard Flat Root Saw for 3/8" rod



FOR BLADE ONLY ADD "B" AFTER PART NO. AND DEDUCT \$10.00

HEAVY DUTY CONCAVE ROOT SAWS 3/16" THICK

HCRS-3-1	3"	3" HD Concave Root Saw for 5/16" rod
HCRS-3-2	3"	3" HD Concave Root Saw for 3/8" rod
HCRS-4-1	4"	4" HD Concave Root Saw for 5/16" rod
HCRS-4-2	4"	4" HD Concave Root Saw for 3/8" rod
HCRS-5-1	5"	5" HD Concave Root Saw for 5/16" rod
HCRS-5-2	5"	5" HD Concave Root Saw for 3/8" rod
HCRS-6-1	6"	6" HD Concave Root Saw for 5/16" rod
HCRS-6-2	6"	6" HD Concave Root Saw for 3/8" rod
HCRS-8-1	8"	8" HD Concave Root Saw for 5/16" rod
HCRS-8-2	8"	8" HD Concave Root Saw for 3/8" rod
HCRS-10-1	10"	10" HD Concave Root Saw for 5/16" rod
HCRS-10-2	10"	10" HD Concave Root Saw for 3/8" rod
HCRS-12-1	12"	12" HD Concave Root Saw for 5/16" rod
HCRS-12-2	12"	12" HD Concave Root Saw for 3/8" rod
HCRS-15-1	15"	15" HD Concave Root Saw for 5/16" rod
HCRS-15-2	15"	15" HD Concave Root Saw for 3/8" rod
HCRS-18-1	18"	18" HD Concave Root Saw for 5/16" rod
HCRS-18-2	18"	18" HD Concave Root Saw for 3/8" rod
HCRS-20-1	20"	20" HD Concave Root Saw for 5/16" rod
HCRS-20-2	20"	20" HD Concave Root Saw for 3/8" rod



FOR BLADE ONLY ADD "B" AFTER PART NO. AND DEDUCT \$10.00

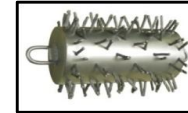
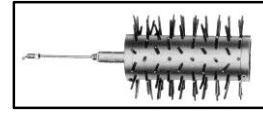
HEAVY DUTY FLAT ROOT SAWS 3/16" THICK

HFRS-3-1	3"	4" HD Flat Root Saw for 5/16" rod
HFRS-3-2	3"	4" HD Flat Root Saw for 3/8" rod
HFRS-4-1	4"	4" HD Flat Root Saw for 5/16" rod
HFRS-4-2	4"	4" HD Flat Root Saw for 3/8" rod
HFRS-5-1	5"	4" HD Flat Root Saw for 5/16" rod
HFRS-5-2	5"	4" HD Flat Root Saw for 3/8" rod
HFRS-6-1	6"	6" HD Flat Root Saw for 5/16" rod
HFRS-6-2	6"	6" HD Flat Root Saw for 3/8" rod
HFRS-8-1	8"	8" HD Flat Root Saw for 5/16" rod
HFRS-8-2	8"	8" HD Flat Root Saw for 3/8" rod
HFRS-10-1	10"	10" HD Flat Root Saw for 5/16" rod
HFRS-10-2	10"	10" HD Flat Root Saw for 3/8" rod
HFRS-12-1	12"	12" HD Flat Root Saw for 5/16" rod
HFRS-12-2	12"	12" HD Flat Root Saw for 3/8" rod
HFRS-15-1	15"	15" HD Flat Root Saw for 5/16" rod
HFRS-15-2	15"	15" HD Flat Root Saw for 3/8" rod
HFRS-18-1	18"	18" HD Flat Root Saw for 5/16" rod
HFRS-18-2	18"	18" HD Flat Root Saw for 3/8" rod
HFRS-20-1	20"	20" HD Flat Root Saw for 5/16" rod
HFRS-20-2	20"	20" HD Flat Root Saw for 3/8" rod



TURN TYPE PORCUPINE

D-4-1	4"	4" Porcupine turn type for 5/16" rods
D-4-2	4"	4" Porcupine turn type for 3/8" rods
D-6-1	6"	6" Porcupine turn type for 5/16" rods
D-6-2	6"	6" Porcupine turn type for 3/8" rods
D-8-1	8"	8" Porcupine turn type for 5/16" rods
D-8-2	8"	8" Porcupine turn type for 3/8" rods
D-10-1	10"	10" Porcupine turn type for 5/16" rods
D-10-2	10"	10" Porcupine turn type for 3/8" rods
D-12-1	12"	12" Porcupine turn type for 5/16" rods
D-12-2	12"	12" Porcupine turn type for 3/8" rods
D-15-1	15"	15" Porcupine turn type for 5/16" rods
D-15-2	15"	15" Porcupine turn type for 3/8" rods
D-18-1	18"	18" Porcupine turn type for 5/16" rods
D-18-2	18"	18" Porcupine turn type for 3/8" rods



ALSO AVAILABLE IN PULL TYPE. PP-6, PP-8, PP-10 ETC... SAME PRICE.

SEWER BRUSH

C-4-1	4"	4" Steel Sewer Brush for 5/16" Rods
C-4-2	4"	4" Steel Sewer Brush for 3/8" Rods
C-6-1	6"	6" Steel Sewer Brush for 5/16" Rods
C-6-2	6"	6" Steel Sewer Brush for 3/8" Rods
C-8-1	8"	8" Steel Sewer Brush for 5/16" Rods
C-8-2	8"	8" Steel Sewer Brush for 3/8" Rods
C-10-1	10"	10" Steel Sewer Brush for 5/16" Rods
C-10-2	10"	10" Steel Sewer Brush for 3/8" Rods
C-12-1	12"	12" Steel Sewer Brush for 5/16" Rods
C-12-2	12"	12" Steel Sewer Brush for 3/8" Rods



3 BLADE CUTTERS CHUCKS

CH-1-1	5/16"	Chuck with Adapter Rod
CH-1-2	3/8"	Chuck with Adapter Rod
CH-1-3	0.375	Chuck with Set Screw Connection
CH-1-4	0.393	Chuck with Set Screw Connection
CH-1-5	0.415	Chuck with Set Screw Connection
CH-1-6	0.461	Chuck with Set Screw Connection



ASSEMBLED

PUMA DOUBLE SIDED CURVED BLADES FOR 3 BLADE CUTTER

CB-4-3	4"	Blades only - 3 per set
CB-6-3	6"	Blades only - 3 per set
CB-8-3	8"	Blades only - 3 per set
CB-10-3	10"	Blades only - 3 per set
CB-12-3	12"	Blades only - 3 per set
CB-15-3	15"	Blades only - 3 per set

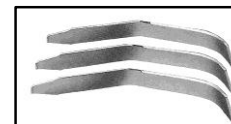
FOR FULL SIZE ADD "FS" AND \$2.00 TO EACH BLADE



FLAT BLADES FOR 3 BLADE CUTTER

FB-4-3	4"	Blades only - 3 per set
FB-6-3	6"	Blades only - 3 per set
FB-8-3	8"	Blades only - 3 per set
FB-10-3	10"	Blades only - 3 per set
FB-12-3	12"	Blades only - 3 per set
FB-15-3	15"	Blades only - 3 per set

FOR FULL SIZE ADD "FS" AND \$2.00 TO EACH BLADE



SPECIAL SPRING ITEMS

SSU-1	1"	1" O.D. OF 1/4" WIRE X 12" LONG WITH RH X LH 5/16" NUTS.
SSU-2	1.25"	UNIVERSAL SPRINGS 1.25" DIA. X 12" L. W/ 5/16" LH X RH PIGTAIL
SSCR-3		1" X 3' COILED ROD WITH RH X LH 5/16" NUTS
SCR-25		1" X 25' COILED ROD WITH 5/16" PIGS TAILS EACH SIDE
CRX516rh		1" COILED ROD ROLLED THREAD x 5/16" RH CITY THREAD
SCR-25S		SAME BUT WITH FEMALE 5/16" RH CRX516RH.



POWER ROD DRIVE TRAILER AND ACCESSORIES

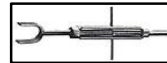
SPD-3 3 HP POWERDRIVE
 SPD-6.5 6.5 HP POWERDRIVE
 SPD-8 8 HP POWERDRIVE
 (HONDA ENGINE AVAILABLE)



RR-1-1 Rod Reel
 RR-1-2 Rod Reel Stand Street type
 RR-1-3 Rod Reel Stand Trailer type



RR-1-4 Lower Manhole rigid rod guide
 RR-1-5 Foot Jack support
 RR-1-6 Back Jack support
 RR-1-7 Manhole Jack support



H-10-1 Carry All Trailer
 H-11-1 Stop, Tail, & Turning Lights
 H-12-1 Pintle ring
 H-13-1 Electric Brakes

